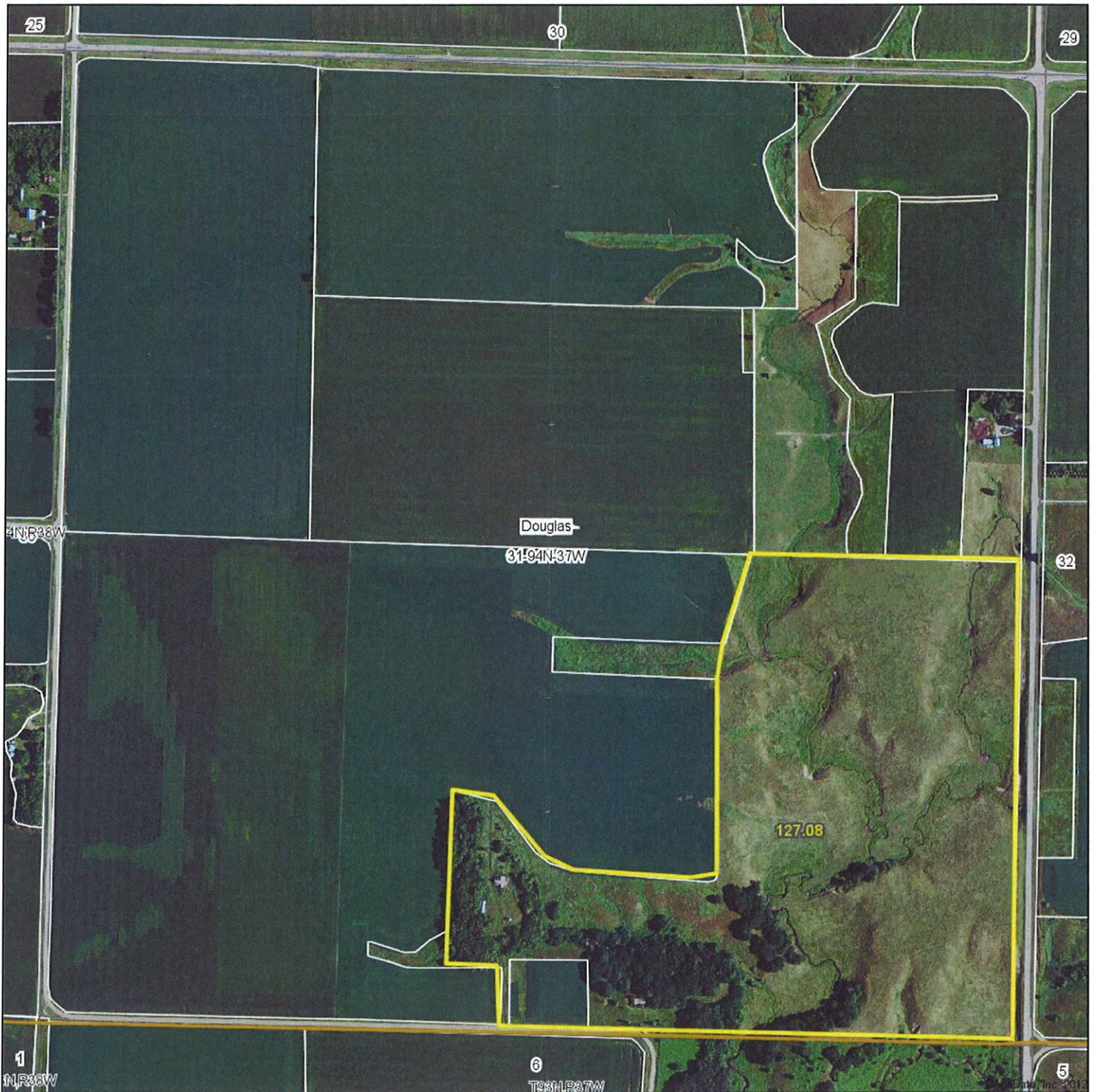


Aerial Map



MIDWEST LAND
712-262-3110 MANAGEMENT

Maps provided by:



©AgriData, Inc. 2012
www.AgriDataInc.com

31-94N-37W
Clay County
Iowa

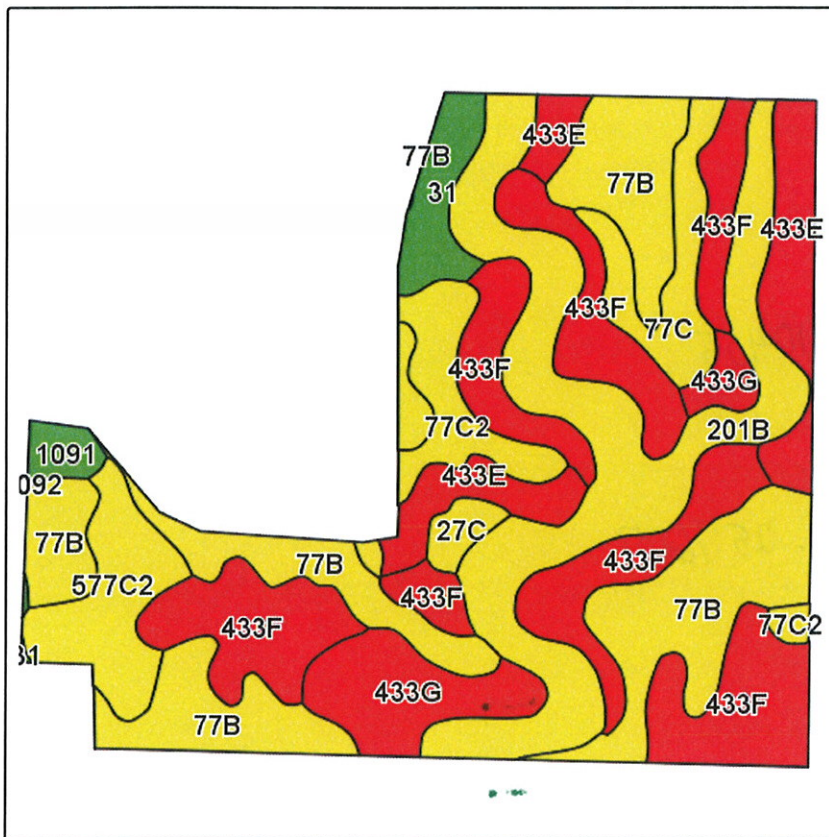
map center: 42° 55' 1.77, 95° 15' 34.99
scale: 8961



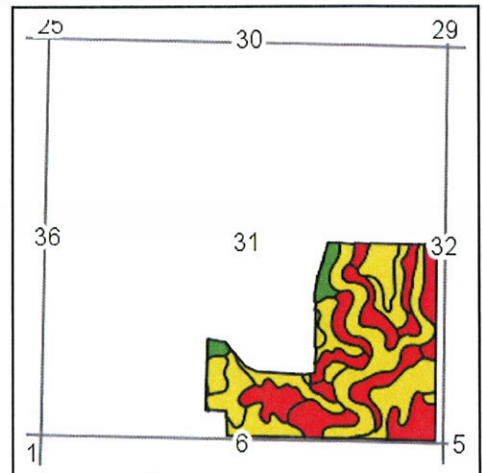
4/3/2013

Field borders provided by Farm Service Agency as of 5/21/2008. Aerial photography provided by Aerial Photography Field Office.

Soils Map-CSR(as of 1/21/12)



Field borders provided by Farm Service Agency as of 5/21/2008.
Soils data provided by USDA and NRCS.



State: **Iowa**
County: **Clay**
Location: **31-94N-37W**
Township: **Douglas**
Acres: **127.1**
Date: **4/3/2013**

& REAL ESTATE, INC
MIDWEST LAND
712-262-3110 MANAGEMENT



Maps provided by:



Code	Soil Description	Acres	Percent of field	CSR Legend	Non-Irr Class	CSR*	Corn	Soybeans
433F	Moneta loam, 18 to 25 percent slopes	31.5	24.8%		Vle	5		
77B	Sac silty clay loam, 2 to 5 percent slopes	30.9	24.3%		Ile	71	181	47
201B	Coland-Terril complex, 2 to 5 percent slopes	23.9	18.8%		Ile	51	154	39
433E	Moneta loam, 14 to 18 percent slopes	9.9	7.8%		IVe	25	119	23
433G	Moneta loam, 25 to 40 percent slopes	7.6	6.0%		Vlle	5		
577C2	Everly clay loam, 5 to 9 percent slopes, moderately eroded	6.6	5.2%		IIle	51	154	37
77C2	Sac silty clay loam, 5 to 9 percent slopes, moderately eroded	5.5	4.3%		IIle	53	157	43
77C	Sac silty clay loam, 5 to 9 percent slopes	5.1	4.0%		IIle	55	159	44
31	Afton silty clay loam, 0 to 2 percent slopes	3.5	2.8%		IIw	75	186	51
1091	McCreath silty clay loam, 0 to 2 percent slopes	1.4	1.1%		I	83	197	54
27C	Terril loam, 5 to 9 percent slopes	1.2	1.0%		IIle	61	167	41
Weighted Average						41.1	112.4	28.5

Note: ALL soils information on this page is dated 1/21/2012

*CSR ratings will be available for a limited time to aid in the transition to CSR2.