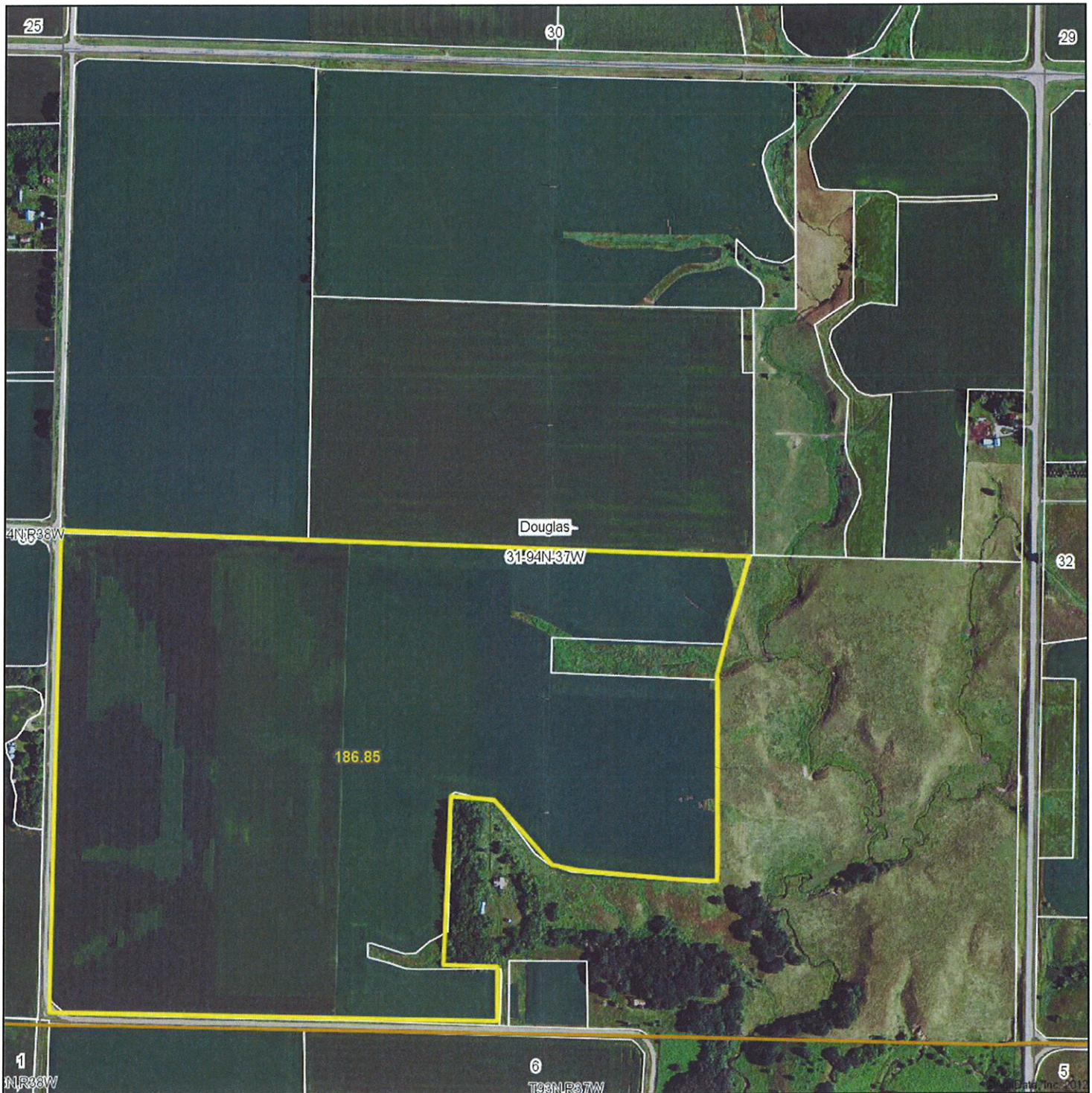


# Aerial Map



**MIDWEST LAND**  
712-262-3110 MANAGEMENT

Maps provided by:



©AgriData, Inc. 2012  
www.AgriDataInc.com

**31-94N-37W**  
**Clay County**  
**Iowa**

map center: 42° 55' 1.77, 95° 15' 34.99

scale: 8961

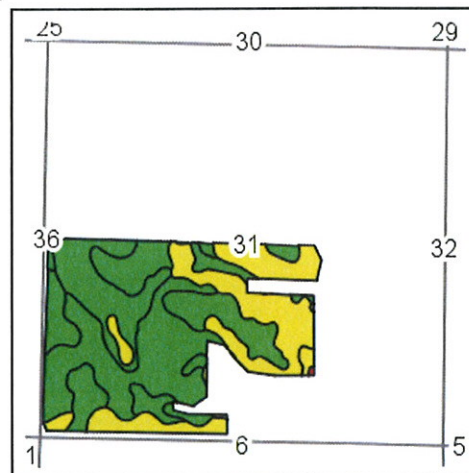
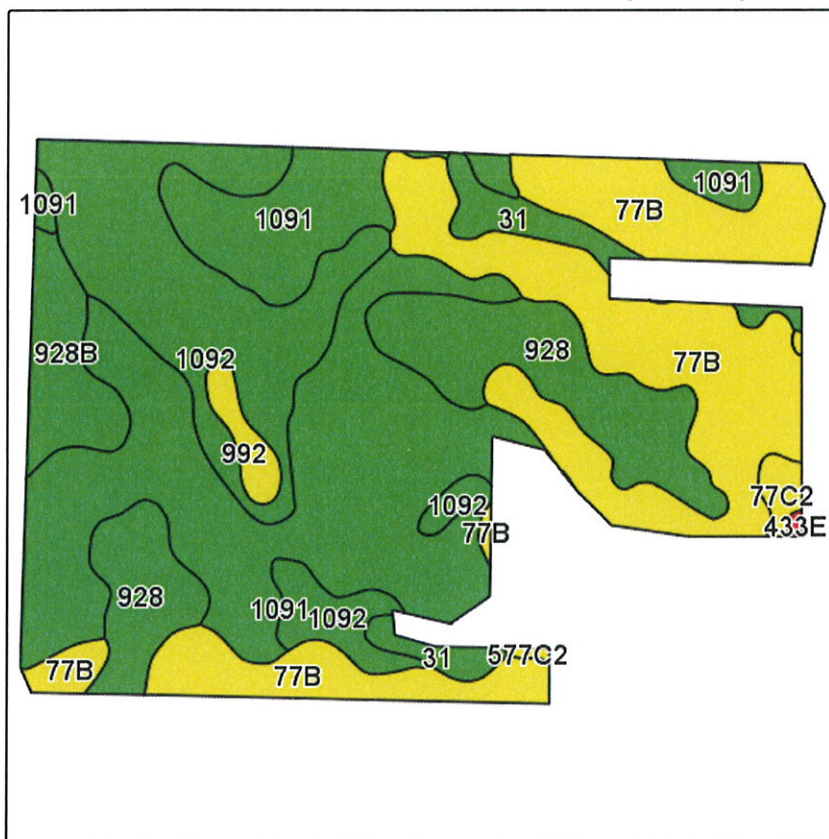


4/3/2013

Field borders provided by Farm Service Agency as of 5/21/2008. Aerial photography provided by Aerial Photography Field Office.



# Soils Map-CSR(as of 1/21/12)



State: Iowa  
 County: Clay  
 Location: 31-94N-37W  
 Township: Douglas  
 Acres: 178  
 Date: 4/3/2013

& REAL ESTATE, INC  
**MIDWEST LAND**  
 712-262-3110 MANAGEMENT



Maps provided by:



©AgriData, Inc 2012  
 www.AgriDataInc.com

Field borders provided by Farm Service Agency as of 5/21/2008.  
 Soils data provided by USDA and NRCS.

Code	Soil Description	Acres	Percent of field	CSR Legend	Non-Irr Class	CSR*	Corn	Soybeans
1091	McCreath silty clay loam, 0 to 2 percent slopes	61.2	34.4%		I	83	197	54
77B	Sac silty clay loam, 2 to 5 percent slopes	48.2	27.1%		Ile	71	181	47
1092	Gillett Grove silty clay loam, 0 to 2 percent slopes	30.1	16.9%		IIlw	78	190	53
928	Annieville silty clay loam, 0 to 2 percent slopes	21.8	12.3%		I	78	190	51
928B	Annieville silty clay loam, 2 to 5 percent slopes	7	3.9%		Ile	73	184	50
31	Afton silty clay loam, 0 to 2 percent slopes	5.7	3.2%		IIlw	75	186	51
992	Gillett Grove silty clay loam, depressional, 0 to 1 percent slopes	2.2	1.2%		IIIW	58	163	37
77C2	Sac silty clay loam, 5 to 9 percent slopes, moderately eroded	1.4	0.8%		IIle	53	157	43
433E	Moneta loam, 14 to 18 percent slopes	0.2	0.1%		IVe	25	119	23
577C2	Everly clay loam, 5 to 9 percent slopes, moderately eroded	0.2	0.1%		IIle	51	154	37
Weighted Average						77	188.9	51

Note: ALL soils information on this page is dated 1/21/2012

\*CSR ratings will be available for a limited time to aid in the transition to CSR2.