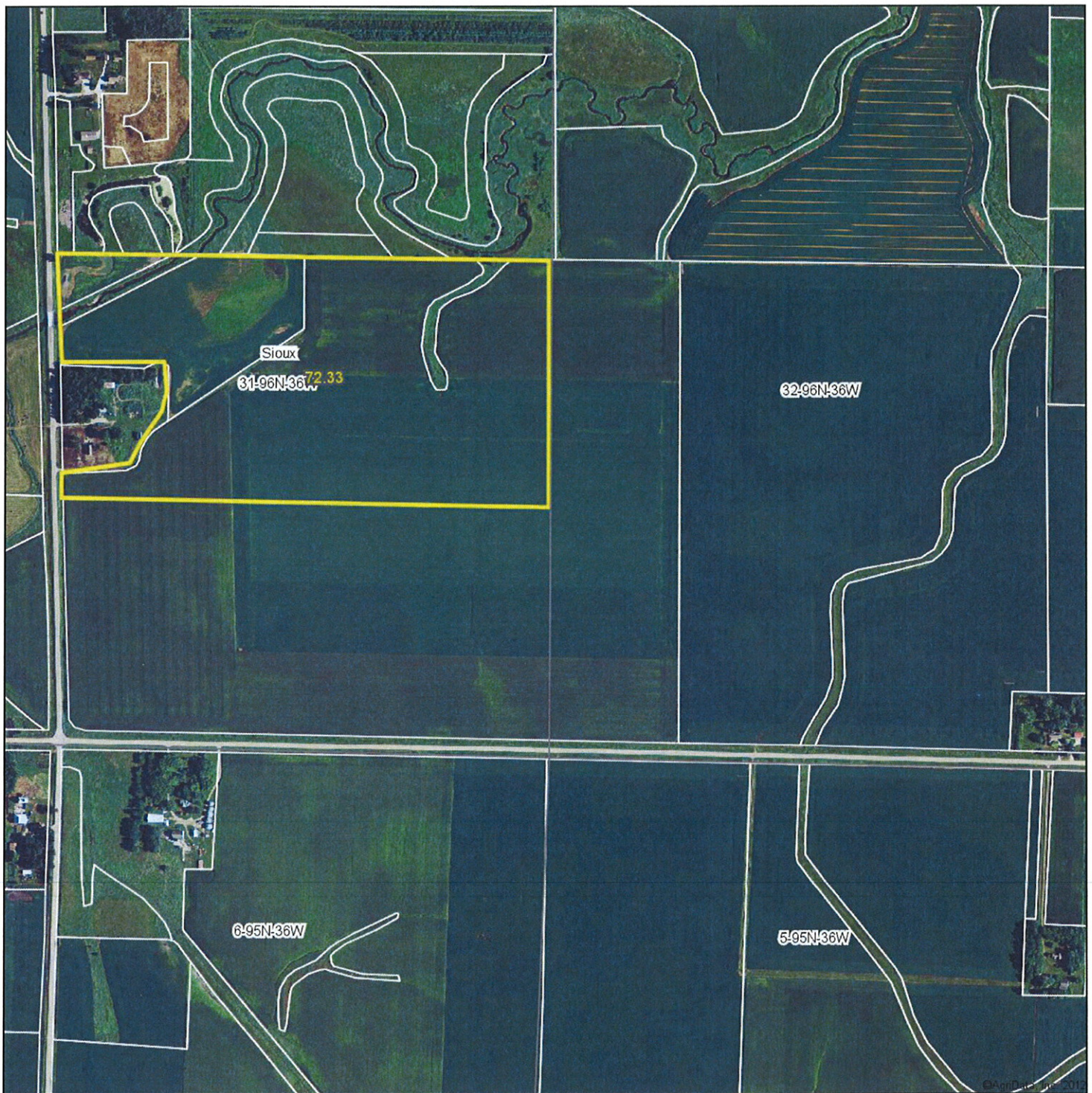


Parcel A
Aerial Map



MIDWEST LAND
712-262-3110 MANAGEMENT

Maps provided by:



©AgriData, Inc. 2012
www.AgriDataInc.com

31-96N-36W
Clay County
Iowa

map center: 43° 5' 10.97, 95° 7' 55.22
scale: 8771



7/18/2012

Field borders provided by Farm Service Agency as of 5/21/2008. Aerial photography provided by Aerial Photography Field Office.

Parcel B
Aerial Map



& REAL ESTATE, INC.
MIDWEST LAND
712-262-3110 MANAGEMENT

Maps provided by:



©AgriData, Inc. 2012
www.AgriDataInc.com

31-96N-36W
Clay County
Iowa

map center: 43° 5' 15.96, 95° 8' 4.86
scale: 6733



7/18/2012

Field borders provided by Farm Service Agency as of 5/21/2008. Aerial photography provided by Aerial Photography Field Office.

Parcel C
Aerial Map



& REAL ESTATE, INC.
MIDWEST LAND
712-262-3110 MANAGEMENT

Maps provided by:



©AgriData, Inc. 2012
www.AgriDataInc.com

31-96N-36W
Clay County
Iowa

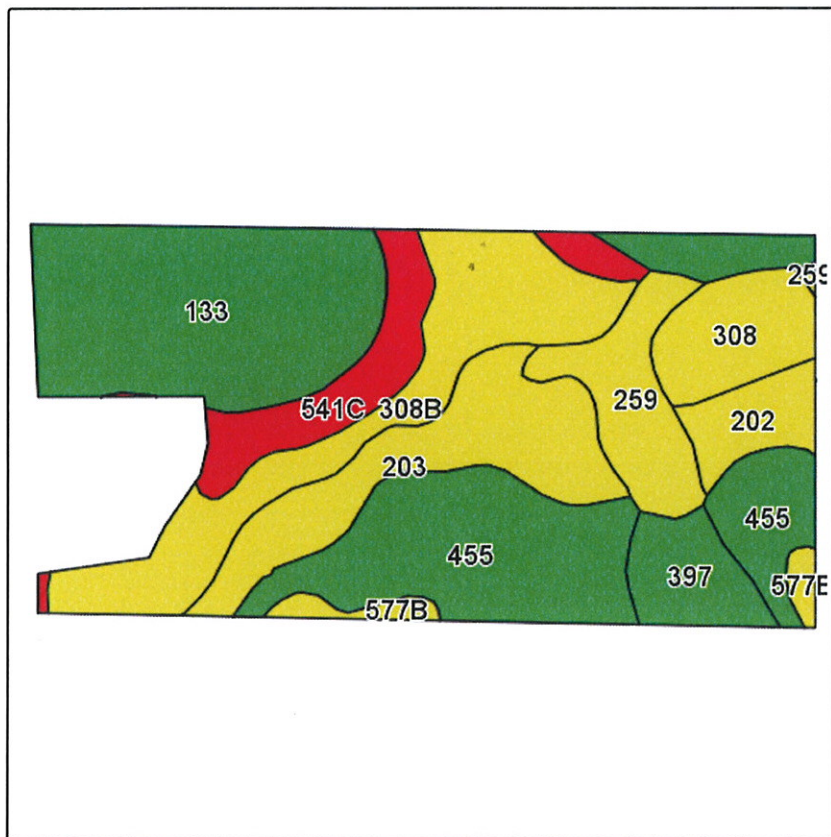
map center: 43° 5' 15.96, 95° 8' 4.86
scale: 6733



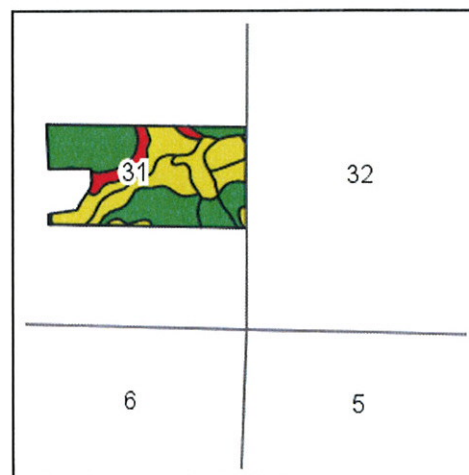
7/18/2012

Field borders provided by Farm Service Agency as of 5/21/2008. Aerial photography provided by Aerial Photography Field Office.

Parcel A Soils Map



Field borders provided by Farm Service Agency as of 5/21/2008.
Soils data provided by USDA and NRCS.



State: Iowa
County: Clay
Location: 31-96N-36W
Township: Sioux
Acres: 72.3
Date: 7/18/2012

& REAL ESTATE, INC.
MIDWEST LAND
712-262-3110 MANAGEMENT

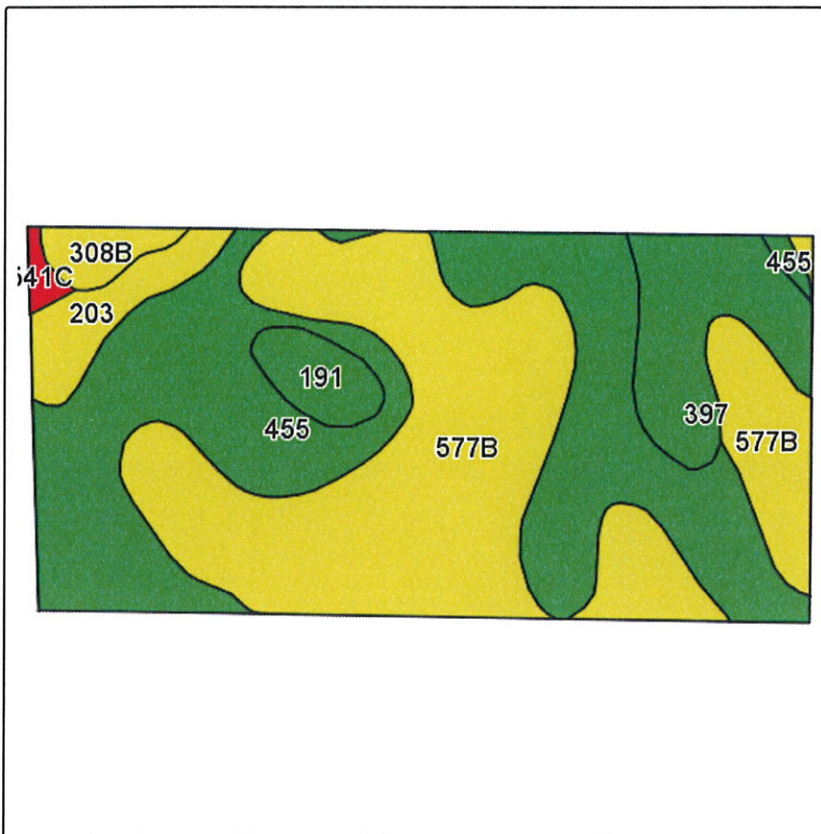


Maps provided by:

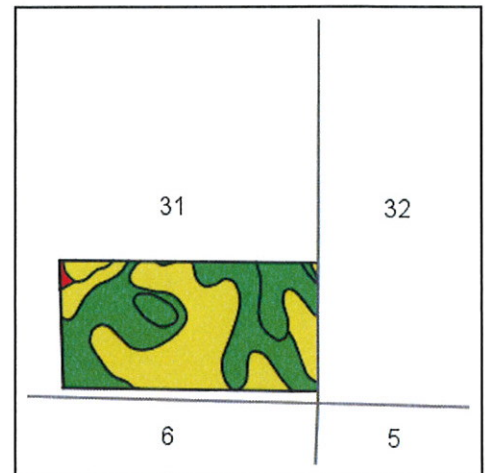


Code	Soil Description	Acres	Percent of field	CSR Legend	Non-Irr Class	CSR	Corn	Soybeans
133	Colo silty clay loam, 0 to 2 percent slopes, occasionally flooded	17.1	23.5%		IIw	73	184	47
455	Wilmonton clay loam, 1 to 3 percent slopes	13.9	19.3%		I	74	185	41
308B	Wadena loam, 32 to 40 inches to sand and gravel, 2 to 5 percent slopes	10.8	14.9%		Ile	60	166	33
203	Cylinder loam, 32 to 40 inches to sand and gravel, 0 to 2 percent slopes	8.6	11.9%		Ils	71	181	40
541C	Estherville-Hawick complex, 5 to 9 percent slopes	5.5	7.6%		IVs	5	92	16
259	Biscay clay loam, 32 to 40 inches to sand and gravel, 0 to 2 percent slopes	5	7.0%		IIw	70	180	38
308	Wadena loam, 32 to 40 inches to sand and gravel, 0 to 2 percent slopes	4.3	5.9%		Ils	65	173	35
397	Letri clay loam, 0 to 2 percent slopes	3.2	4.5%		IIw	72	182	44
202	Cylinder loam, 24 to 32 inches to sand and gravel, 0 to 2 percent slopes	2.6	3.6%		Ils	60	166	34
577B	Everly clay loam, 2 to 5 percent slopes	1.3	1.8%		Ile	68	177	41
Weighted Average						64.6	172.4	38.5

Parcel B Soils Map



Field borders provided by Farm Service Agency as of 5/21/2008.
Soils data provided by USDA and NRCS.



State: **Iowa**
County: **Clay**
Location: **31-96N-36W**
Township: **Sioux**
Acres: **77**
Date: **7/18/2012**

MIDWEST LAND
MANAGEMENT
712-262-3110



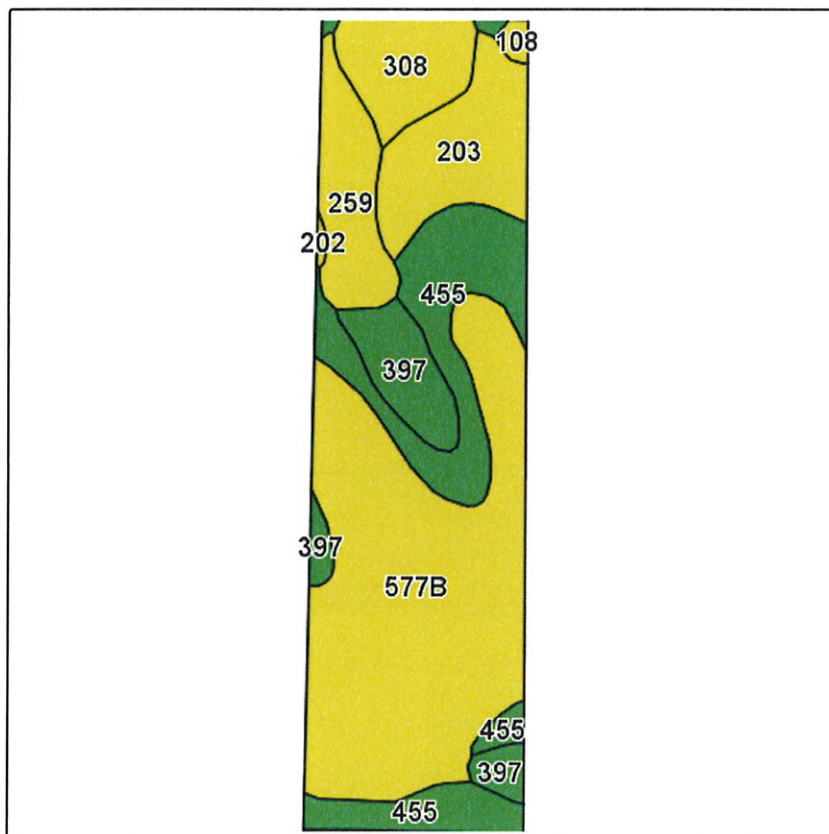
Maps provided by:



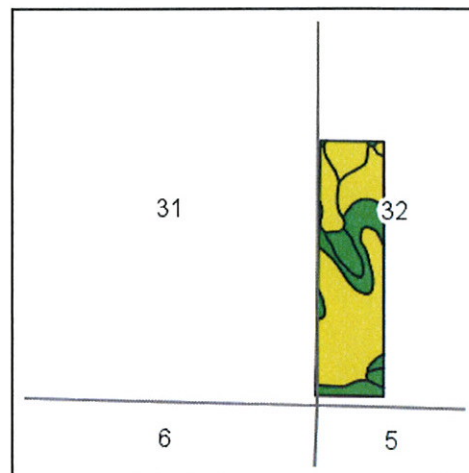
©AgriData, Inc 2012
www.AgriDataInc.com

Code	Soil Description	Acres	Percent of field	CSR Legend	Non-Irr Class	CSR	Corn	Soybeans
577B	Everly clay loam, 2 to 5 percent slopes	32.5	42.2%		Ile	68	177	41
455	Wilmonton clay loam, 1 to 3 percent slopes	30.4	39.4%		I	74	185	41
397	Letri clay loam, 0 to 2 percent slopes	6.8	8.8%		IIw	72	182	44
203	Cylinder loam, 32 to 40 inches to sand and gravel, 0 to 2 percent slopes	3.1	4.0%		IIIs	71	181	40
191	Rushmore silty clay loam, 0 to 2 percent slopes	2.2	2.9%		IIw	76	188	51
308B	Wadena loam, 32 to 40 inches to sand and gravel, 2 to 5 percent slopes	1.5	2.0%		Ile	60	166	33
541C	Estherville-Hawick complex, 5 to 9 percent slopes	0.5	0.6%		IVs	5	92	16
Weighted Average						70.5	180.2	41.2

Parcel C Soils Map



Field borders provided by Farm Service Agency as of 5/21/2008.
Soils data provided by USDA and NRCS.



State: **Iowa**
County: **Clay**
Location: **31-96N-36W**
Township: **Sioux**
Acres: **39.6**
Date: **7/18/2012**

& REAL ESTATE, INC.
MIDWEST LAND
712-262-3110 MANAGEMENT



Maps provided by:



©AgriData, Inc 2012
www.AgriDataInc.com

Code	Soil Description	Acres	Percent of field	CSR Legend	Non-Irr Class	CSR	Corn	Soybeans
577B	Everly clay loam, 2 to 5 percent slopes	17.9	45.2%		Ile	68	177	41
455	Wilmonton clay loam, 1 to 3 percent slopes	7.6	19.2%		I	74	185	41
203	Cylinder loam, 32 to 40 inches to sand and gravel, 0 to 2 percent slopes	4.5	11.3%		Ils	71	181	40
259	Biscay clay loam, 32 to 40 inches to sand and gravel, 0 to 2 percent slopes	3.2	8.1%		Ilw	70	180	38
397	Letri clay loam, 0 to 2 percent slopes	3	7.7%		Ilw	72	182	44
308	Wadena loam, 32 to 40 inches to sand and gravel, 0 to 2 percent slopes	2.9	7.3%		Ils	65	173	35
108	Wadena loam, 24 to 32 inches to sand and gravel, 0 to 2 percent slopes	0.2	0.6%		Ils	52	155	30
133	Colo silty clay loam, 0 to 2 percent slopes, occasionally flooded	0.2	0.4%		Ilw	73	184	47
202	Cylinder loam, 24 to 32 inches to sand and gravel, 0 to 2 percent slopes	0.1	0.2%		Ils	60	166	34
Weighted Average						69.6	179.2	40.4