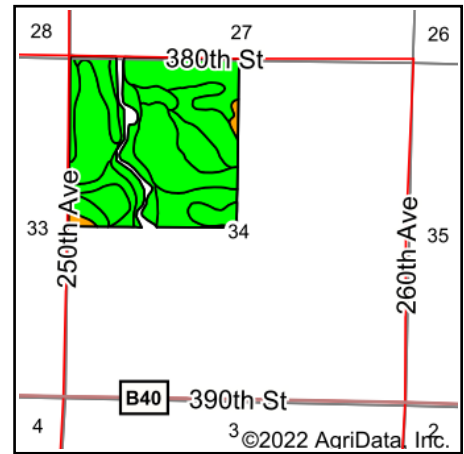
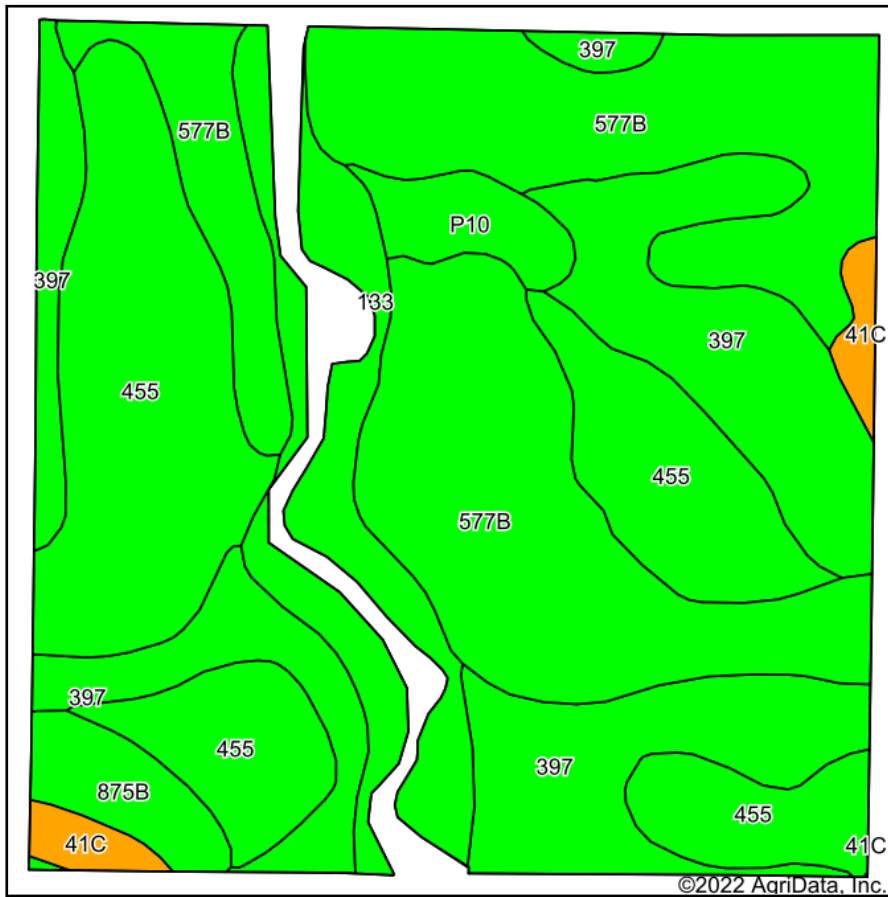


Soils Map



State: **Iowa**
 County: **Clay**
 Location: **34-96N-36W**
 Township: **Sioux**
 Acres: **150.35**
 Date: **8/24/2022**

MIDWEST LAND & REAL ESTATE, INC.
 712-262-3110 MANAGEMENT
 Maps Provided By: **surety**
 CUSTOMIZED ONLINE MAPPING
 © AgriData, Inc. 2021 www.AgriDataInc.com

Area Symbol: IA041, Soil Area Version: 31

Code	Soil Description	Acres	Percent of field	CSR2 Legend	CSR2**	CSR
577B	Everly clay loam, 2 to 5 percent slopes	50.83	33.8%		88	68
455	Wilmonton clay loam, 1 to 3 percent slopes	40.05	26.6%		91	74
397	Letri clay loam, 0 to 2 percent slopes	35.88	23.9%		90	72
133	Colo silty clay loam, deep loess, 0 to 2 percent slopes, occasionally flooded	13.60	9.0%		78	73
875B	Roine fine sandy loam, 2 to 5 percent slopes	3.87	2.6%		81	41
P10	Afton silty clay loam, Sheldon creek formation, 0 to 2 percent slopes, occasionally flooded	3.52	2.3%		82	
41C	Sparta loamy sand, 5 to 9 percent slopes	2.60	1.7%		35	5
Weighted Average					87.1	*-

**IA has updated the CSR values for each county to CSR2.

*- CSR weighted average cannot be calculated on the current soils data, use prior data version for csr values.

Soils data provided by USDA and NRCS.